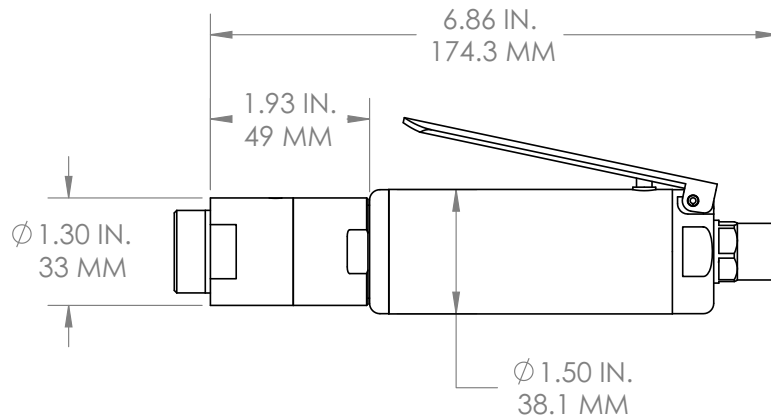


JIFFY MODULAR INSTALLATION MOTOR (JMI)
 SD SERIES 0.3 H.P. STRAIGHT HANDLE
 REVERSE RUNNING



CE To conform to EC standards straight motors must be ordered with a safety lever (page 60)
 Add -I to motor order number to designate safety lever.

| RPM | ORDER NUMBER | WEIGHT |
|-----|--------------|------------------|
| 250 | 20774 | 1.50 LB / .68 KG |
| 500 | 20775 | 1.50 LB / .68 KG |



PHONE: 1 775 883 1072 FAX: 1 775 883 4857