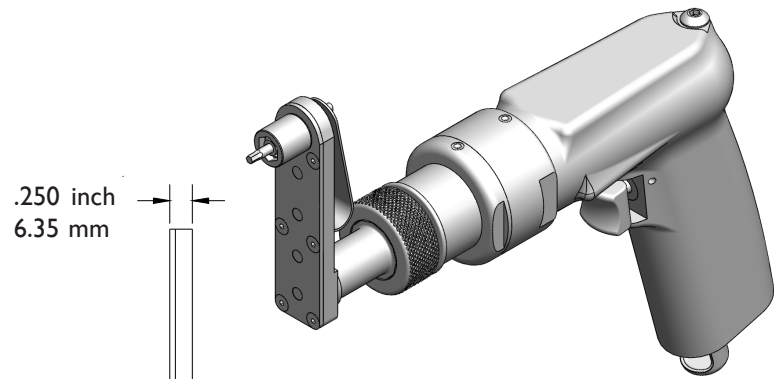


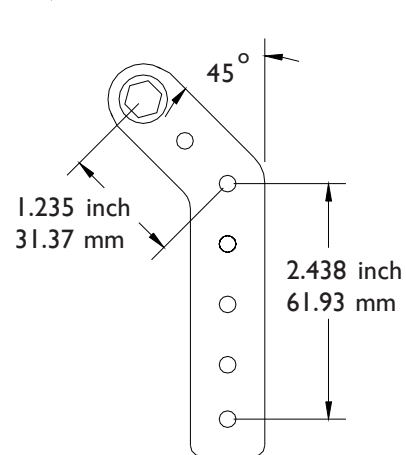
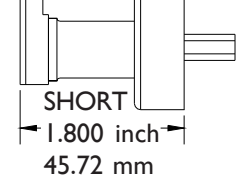
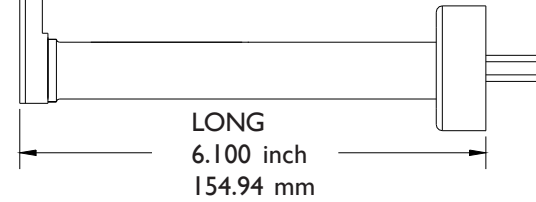
# LTI SERIES 1 60 Inch Lbs / 6.77 Nm

L TYPE INSTALLATION .366 inch / 9.30mm center to edge distance  
Attachments only

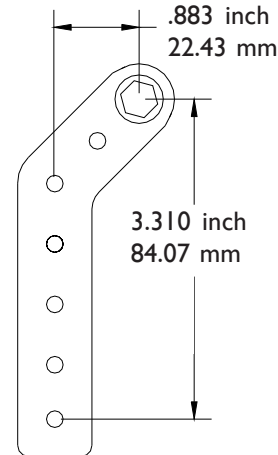


20509 Attachment  
Shown with 17882 .85 hp  
500 RPM offset motor

.250 inch  
6.35 mm

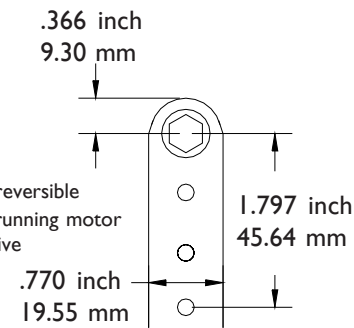


RIGHT HAND  
20502 Long  
20503 Short

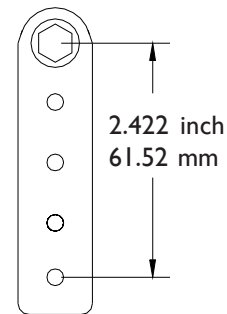


LEFT HAND  
20504 Long  
20505 Short

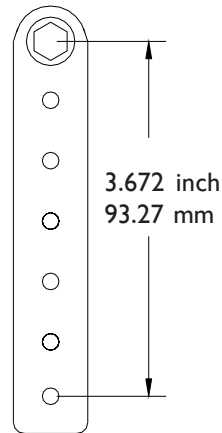
You must select a nose gear to order an attachment. See the nose gear tables for information on the variety of ways our attachments will adapt to your fastener.



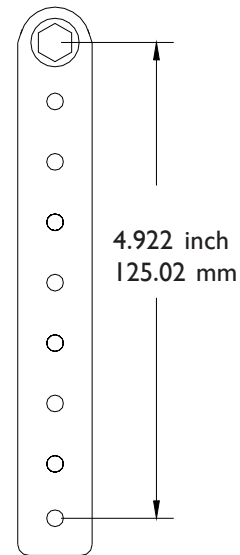
20506\* Long  
20507\* Short



20508 Long  
20509 Short



20510 Long  
20511 Short



20512 Long  
20513 Short

\* Requires reversible or reverse running motor for front drive

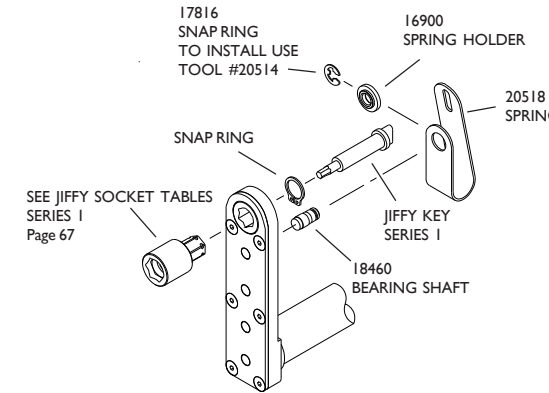
PHONE: 775 883 1072 FAX: 775 883 4857

# LTI SERIES 1 60 Inch Lbs / 6.77 Nm

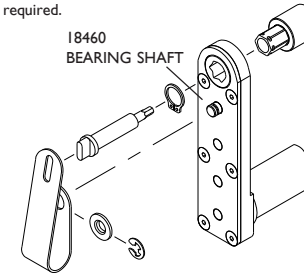
L TYPE INSTALLATION .366 inch / 9.30mm center to edge distance



## 20450 JIFFY KEY CONTROL ASSEMBLY

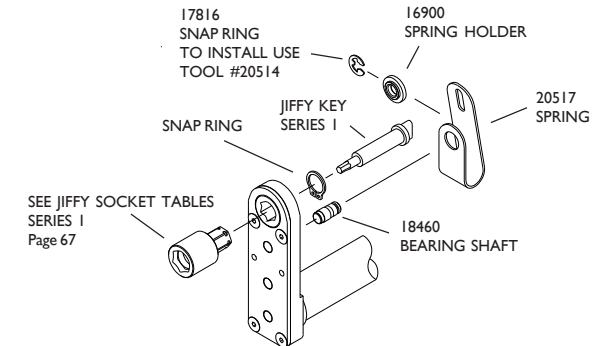


For BACK DRIVE setup the 18460 bearing shaft must be reversed. You must specify BACK DRIVE when ordering. Reversible or reverse running motors required.

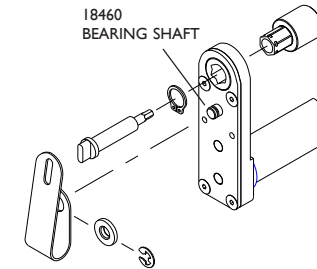


## 20449 JIFFY KEY CONTROL ASSEMBLY

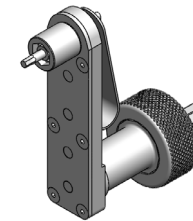
ATTACHMENTS 20506 & 20507 (4 GEAR) ONLY Reversible or reverse running motors required.



For BACK DRIVE setup the 18460 bearing shaft must be reversed. You must specify BACK DRIVE when ordering.

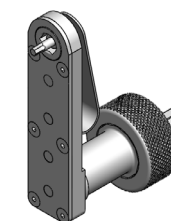


## Nose Gear Selection



The SOCKET DRIVER will adapt the attachment to accept Series 1 Sockets starting on Page 67. Order with or without the Jiffy Key System.

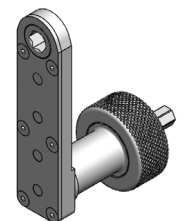
PART NO.	SIZE	TYPE
20515	9/32	SOCKET DRIVER
20516	1/4	SQ. DRIVE MALE



HEX FLUSH The socket is built into the nose gear. Choose the Hex Flush gear and Key from the table or order without the Jiffy Key System.

PART NO.	SIZE	TYPE
20403	7/32	HEX FLUSH
20404	1/4	HEX FLUSH
20405	9/32	HEX FLUSH
20406	5/16	HEX FLUSH
20407	11/32	HEX FLUSH

JIFFY KEYS FLUSH			
KEY HEX	1/16	5/64	3/32
PART NO.	18932	18933	18934



HEX THRU The hex listed runs completely through the nose gear. No key system is used.

PART NO.	HEX SIZE	TYPE
20477	7/32	HEX THRU
20478	1/4	HEX THRU
15466	9/32	HEX THRU
15467	5/16	HEX THRU
15468	11/32	HEX THRU

PHONE: 775 883 1072 FAX: 775 883 4857